



MICRO SWITCH

FREEPORT, ILLINOIS, U.S.A.
A DIVISION OF HONEYWELL

FED. MFG. CODE 91929

SWITCH-BASIC

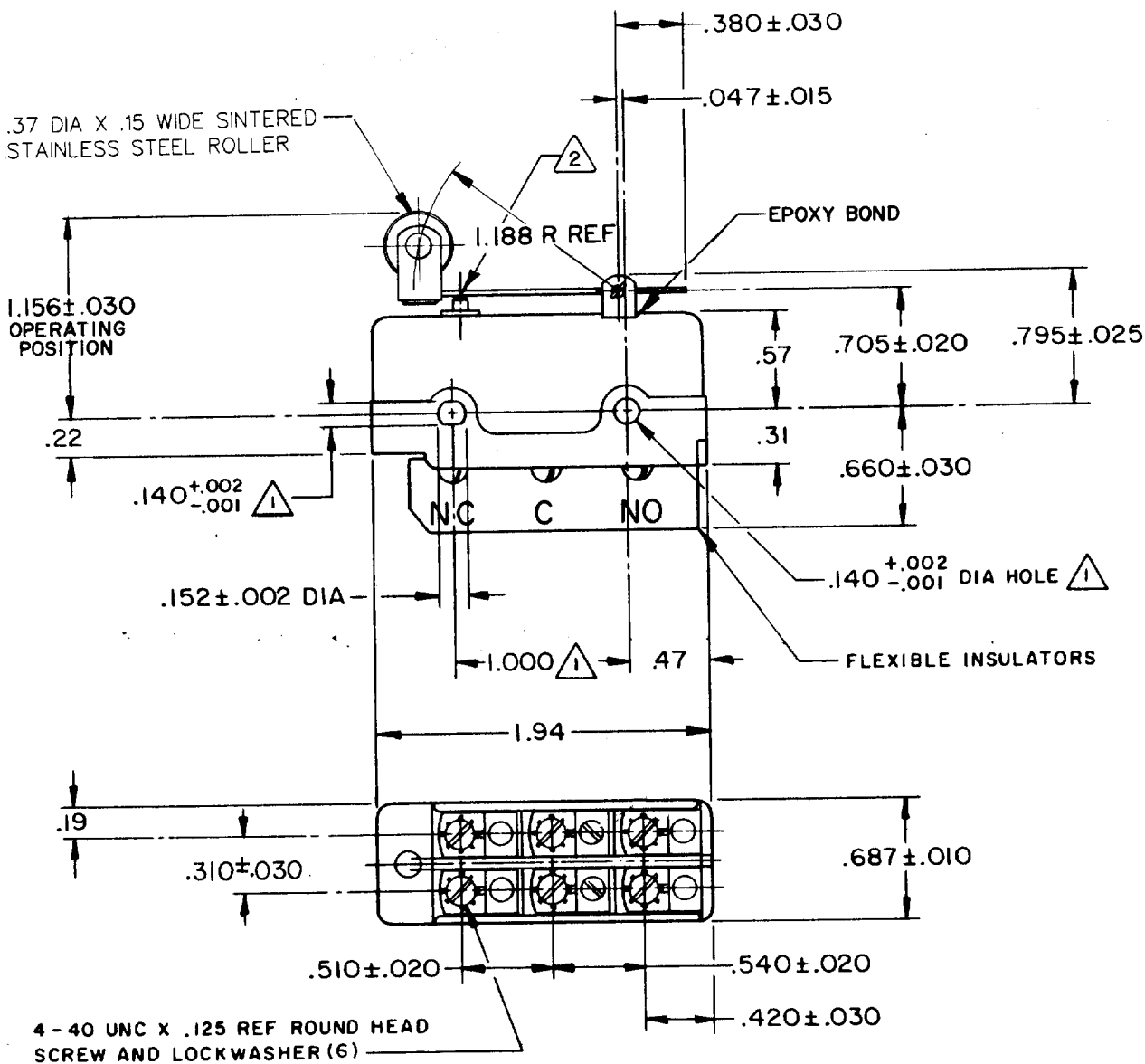
CATALOG LISTING

DT-2RV212-A7

DT-2RV212-A7
 REPLACES
M
 DRAWING NUMBER
DT-2RV212-A7
 ISSUE
10
17
 REVISIONS

A	CO17725	LEB	21 JUNE 63
B	CO24941	MBS	3 DEC 68
C	CO26075	MBS	26 AUG 69
D	CO37528	CJH	31 AUG 76
E	CO38280		
K	P	K	31 MAR 77
F	CO46028		
G	CO61634	WJM	13 JUN 79
H	CO-75204B	TSK	17 JUL 87
		TSM	1 FEB 94

 CHECK
 L.S.D
 22 JUN 63
 21 JUNE 63
 DRAWN
 FO-50378



NOTE -



MOUNTING HOLES WILL ACCEPT PINS OR SCREWS OF .139 MAX DIA ON 1.000 ± .002 CENTERS



OVERTRAVEL TO BE MEASURED AT CENTER LINE OF PLUNGER

THIS DRAWING COVERS A PROPRIETARY ITEM AND IS THE PROPERTY OF MICRO SWITCH, A DIVISION OF MINNEAPOLIS-HONEYWELL REGULATOR CO. THIS DRAWING IS NOT TO BE COPIED OR USED WITHOUT THE APPROVAL OF MICRO SWITCH.

CHARACTERISTICS

OPERATING FORCE ----- 9-15 OZ
 RELEASE FORCE ----- 1 1/2 OZ MIN
 PRETRAVEL ----- .130 MAX
 DIFFERENTIAL TRAVEL ----- .050-.085
 OVERTRAVEL ----- (2) .005 MIN

ELECTRICAL DATA

CONTACT ARRANGEMENT
 D P D T
 UL LISTED-FILE E12252
 CODE L59
 10A-125 OR 250 VAC
 0.3A-125 VDC; 0.15A-250 VDC

SCALE FULL

DO NOT SCALE PRINT

UNLESS OTHERWISE NOTED

DIMENSIONS ARE IN INCHES

TOLERANCES ARE:

ONE PLACE	(.0)	±.030
TWO PLACE	(.00)	±.015
THREE PLACE	(.000)	±.005
ANGLES		±

WEIGHT .085 LB

